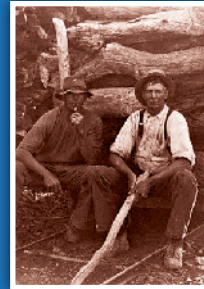
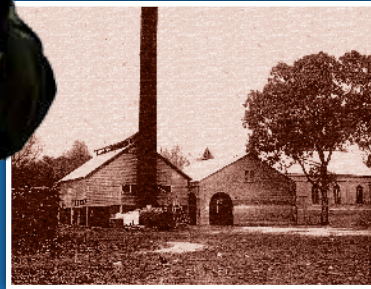




THE CHAFFEY TRAIL

Mildura ~ Australia's First Irrigation Colony

Trace the story of how Mildura became an irrigated oasis in the midst of an arid land



In 1847 Jamieson brothers took up land for pastoral use, after a licence had been granted.

In 1858 this site was officially named Mildura.

George and William Benjamin (WB) Chaffey were developing an irrigation settlement in Ontario, California when they met the Victorian Cabinet Minister Alfred Deakin. Deakin was appointed by the Victorian Parliament to visit America on a fact finding mission.

The Chaffey's model irrigation settlement impressed Deakin, who in turn impressed them with the potential for irrigation from the Murray River in Australia.

The Chaffey brothers subsequently came to Australia and, after protracted negotiations, in 1887 purchased the then defunct pastoral lease and created the Mildura Irrigation Colony.

The Chaffey's adapted the plan of Ontario to the present site of Mildura. They developed a series of steam-driven pumps to lift the water from the Murray River, first into King's Billabong, then to various heights to irrigate up to 33,000 acres.

The Chaffey brothers wanted to make Mildura a vibrant community.

Their plans included many visionary concepts: an agricultural college was needed and to finance this, one property in 15 was designated as college lease land now providing funding for schools. Prominent locations were made available for churches and facilities for clubs were encouraged. Parks and town transport were considered – together this gave us the beautiful centre plantation of Deakin Avenue, surely one of the finest thoroughfares in Australia. Lanes and streets were laid out in all the town planning making Mildura the beautiful place it is.

Now you can trace the development of Mildura through the Chaffey Trail. A video production of the 'Chaffey Trail' can be viewed in the theatre at the Mildura Visitor Information Centre 180 Deakin Avenue, from 9.30am – 4.30pm daily ☎ 03 50188 380 for more information.

The story is available in Braille and for Deaf and hearing impaired. Please enquire at the Mildura Information Centre for the Braille Book or Smart Auslan downloads for Android Smart Phones and QR codes. Alternatively, visit our website.

Dates of Significance: 21 October 1886 Chaffey Brothers signed the agreement with Victorian Government
31 May 1887 Indenture signed between Chaffey's, Victorian Government and the Queen

THE CHAFFEY TRAIL

Mildura ~ Australia's First Irrigation Colony

Trace the story with a self guided tour of key heritage sites and buildings of the region

1. The Old Mildura Station Homestead

(GPS Co-ordinates X=606,800 Y=6,218,427)

Situated on the original site in Cureton Avenue. This is a recreation of the first Mildura station established by the Jamieson brothers in 1847, later purchased by the Chaffey's. Open 7 days from 10am til 4pm.

2. Mildura Homestead Cemetery

(GPS Co-ordinates X=606,873 Y=6,218,742)

Mildura's earliest cemetery includes graves of some early pioneers and members of the Chaffey family.

3. Rio Vista House

(GPS Co-ordinates X=606,790 Y=6,217,569)

Rio Vista was the home of WB Chaffey and his family, it is Spanish for 'River View'. Open: Wed – Mon. 11am til 4pm. Closed Tues.

4. Lock 11 & Mildura Weir

(GPS Co-ordinates X=607,372 Y=6,217,741)

The Chaffey's vision and desire to have water permanently accessible for irrigation and river transport was fulfilled through a series of locks and weirs constructed along the Murray of which Lock 11 is at Mildura.

5. Mildura Wharf / Port of Mildura

(GPS Co-ordinates X=607,501 Y=6,216,885)

River transport played a very important part in the opening up of the settlement of Mildura. The Mildura Wharf was completed by 1892 and then extended in 1899 and three additional levels were added to accommodate vessels at various river heights. Daily river cruises available.

6. Mildura Grand Hotel

(GPS Co-ordinates X=607,218 Y=6,216,945)

Mildura was established as a temperance colony and the Grand Hotel was originally the Mildura Coffee Palace. The Chaffey offices next door were later demolished to make way for the expansion of the Grand. The fountain is the only remaining relic of the Chaffey office.

7. Psyche Pumps / King's Billabong

(GPS Co-ordinates X=613,423 Y=6,208,964)

To create an irrigation settlement, pumps were needed to lift water to the height of the land. Visitors to Psyche Bend can experience the original pump house, reconditioned pumps, steam engine and boiler house. King's Billabong is a wetland reserve and bird sanctuary with bird hides. Psyche Pumps open Tuesday & Thursday from 1pm til 4pm and Sundays 10:30am til 12pm. For operating hours please refer to the Mildura Visitor Information Centre.

8. Chateau Mildura

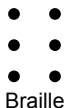
(GPS Co-ordinates X=610,854 Y=6,210,248)

In 1888 the Chaffey brothers planted 150 acres of wine grapes on their Belar Avenue property 'Chateau Mildura' commencing the region's wine industry. Open from 10am til 4pm.

9. Merbein

(GPS Co-ordinates X=599,612 Y=6,218,500)

Starting from the Merbein Rotary Lookout at the top of the white cliffs, which are a unique geological feature and the district's highest point, look to the right, you will see Victoria's first Government owned irrigation pumps, then walk to the left through Pioneer Plantation passing the distillery/winery that was established by WB Chaffey in 1913 and where he sadly collapsed and died in 1926.



* INTERPRETIVE SIGNS ARE AT EACH SITE TO PROVIDE A GREATER STORY

www.thechaffeytrail.com.au

For more information please email chaffey.trail@mildura.vic.gov.au
For more history information please email mildurahistorical@gmail.com