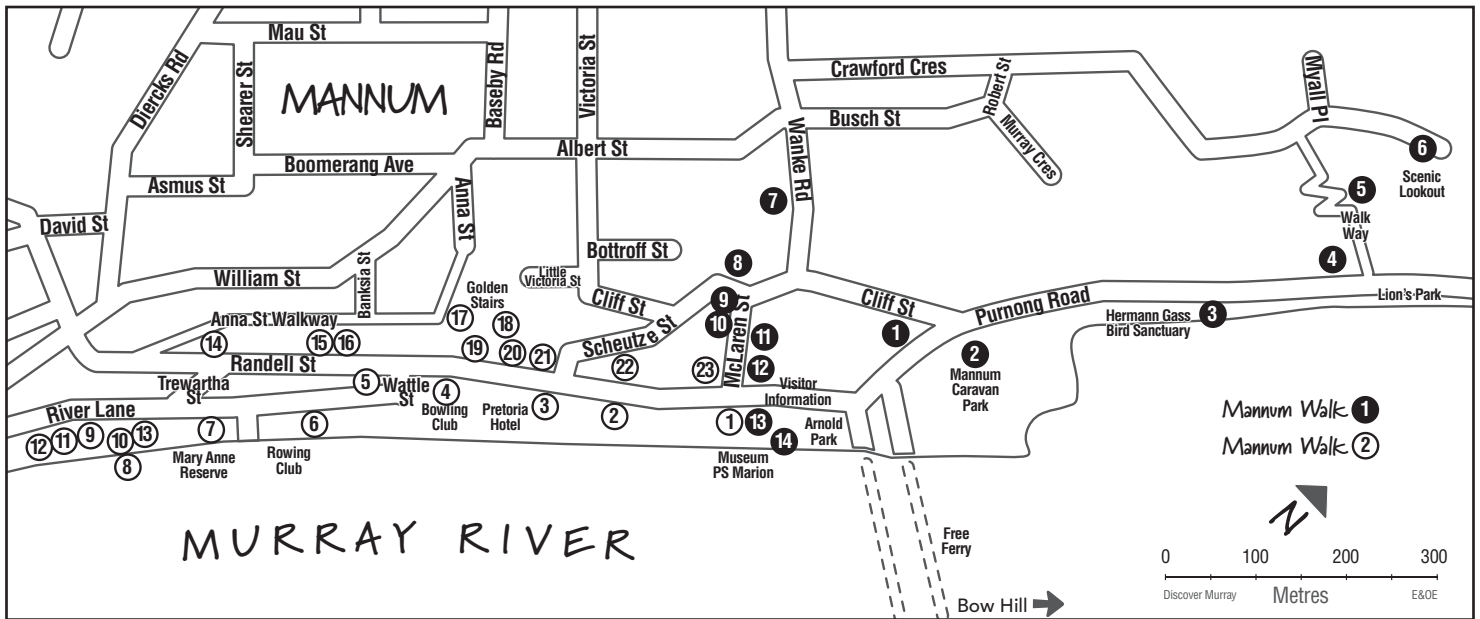


Scenic & Historical Walks around Mannum



Mannum Walk Number ②

An easy and interesting walk incorporating a look at historical buildings in Randell St, and a pleasant walk through Mary Ann reserve.

1 Mannum Dry Dock. Launched at Milang in 1873 and said to be largest floating dock in Southern Hemisphere and the only one in Australia. Towed by William Randell's 'Nil Desperandum' and installed in present position in 1876. Length 140ft x 40ft x 12 feet deep. Later sold to Captain J.G. Arnold to operate his line of steamers from Mannum.

2 Butter Factory built 1924. Closed in 1956. Now Mannum Old Wares.

3 Pretoria Hotel opened 1900 and named to commemorate a British victory in the Boer War (built by Samuel Hoad)

4 Mannum Bowling Club. This site was Shearer's storage yard and wharf. The Shearer factory was then immediately opposite.

5 Mannum Community Club. Opened in February 1891 as the "Allgemeiner Deutscher Verein" - the German Club. The name was changed during the first world war.

6 Mary Ann Reserve was previously known as the Recreation Ground (est. 1898) or "the rec". Renamed to perpetuate the name of the first river boat built and launched by William Randell.

7 Mannum Rowing Club Boathouse built 1910.

7a This was the first **Town Pumping Station** and was located in the vicinity of the present site of the Rowing Club building on Mary Ann Reserve. The water was piped up the hill, under the shops on the corner of Twewartha St to tanks which still exist on a home site at 17 Shearer St.

8 Mannum Wharf. The "Murray Princess", "Proud Mary" and the "Jester" use this wharf regularly.

9 Flood level board shows heights of some of the recorded floods. Note height of 1956 flood.

10 Two cairns in this area record Captain Charles Sturt's voyage past this spot in February 1830, and the P.S. Mary Ann mentioned in No. 6.

11 Rotunda. Built in 1913 by Mr. William Dahl, a stonemason, paper hanger, electrical contractor, signwriter. A "Jack of all Trades" who became the Town Undertaker. When the Rotunda was destroyed by a falling branch about 1989, Leon Warhurst, a grandson of Bill Dahl, a builder and also the local Funeral Director rebuilt it.

12 Location where original "Mary Ann" boiler has stood for many years. Now in the Mannum Dock Museum of River History, 6 Randell St. A replica boiler now on the site. Although square boilers were in use in various industries, this was the first to be used in a ship. Elliott Randell, given the role of fireman by older brother William Randell is said to have started the fire and then taken refuge behind a gum tree.

13 Early stone building, built in 1883 by F. Schutze as a general store, later bakehouse.

14 *The new bakery opposite is the start point for the return walk.*

15 Post Office opened in 1913.

16 Old Council Chambers next door to Newsagency, now the Cottage Window, built 1896, it was in use until present chambers were opened.

17 Known as the "Golden Staircase" built 1925

18 Car Park was originally the **Shearer's Factory.** From here agricultural machinery was moved to storage yards opposite (Bowling Club), then loaded onto boats for transport interstate and export. Immediately behind the car park a track led to David and John Shearer's homes. Buildings on the right were offices. Site where the first Australian Steam Car was built.

19 Building on left was the original **Commercial Bank** built 1909

20 The **Mannum Institute** was built 1882 and renovated 1911. Used extensively as a concert hall, theatre, dance hall, ballroom, church etc

21 ANZ Bank was originally Bank of Adelaide built 1885. Original bank was opposite. Current building built in 1920s.

22 Temme's 'Tru Value' Hardware was originally **Walker's Flour Mill** established 1874. Closed down in 1976. Note flood level markers on the verandah wall.

23 Mannum Hotel was originally the Bogan Hotel. Built 1869 during subdivision of blocks in Mannum. Behind the Hotel's bottle shop are the ruins of Captain W. Randell's first four room cottage, also his large two story home built in 1869.

Walk ends...we hope you enjoyed it!

Australia's First Motor Car



In 1897 residents and horses of Mannum were startled by the appearance of a puffing, clattering horseless carriage making its way at the pace of a hard gallop along the main street.

A rare sight anywhere in the world, the horseless carriage was then regarded as little more than a novelty, only a handful of far sighted people seeing it as a coming revolution in transport. Among them was Henry Ford, but the vehicle that so amazed the inhabitants of Mannum pre-dated his efforts by 10 years. Designed and built by David Shearer.

Mannum, therefore, can justly claim to be one of the first automobile manufacturing centres of the world.

Unfortunately for himself and his country, David Shearer's sole aim had been to prove that a horseless carriage was a workable proposition, and with that accomplished he turned his attention to the manufacturing of farm machinery.

Scenic & Historical Walks around Mannum

Mannum Walk Number 1

A scenic walk to the Lookout and a look at some historical features of Mannum.

Walking time: approximately 1 hour

Conditions: good, but the track to the lookout is fair steep but graded

Starting Point: Visitor Centre. Follow route marked on the map along Purnong Road, past the Caravan Park

1 Mannum Motel (opposite) is built on site of original Police Station and Post Office.

2 Old building north of the Caravan Park entrance is 2nd town pumping station, built in 1887. Now **pump-house bunkhouse**, backpacker accommodation

3 Herman L. Gass Bird Sanctuary. Named in honour of founder who was for many years manager of Mannum Club.

4 Stone cottage on left of walk way was "Tea" stop for coaches.

5 While climbing up **walk way** take advantage of seats provided to enjoy the river views.

6 Cairn at Lookout gives directions to many places.

7 Return, follow map to Wanke Road and continue along "**Donkey Track**" passing Lutheran Manse to Cliff Street.

8 Thomas Randell's House, possibly the first or second stone house in Mannum, probably used as a store and Post Office until he built the Bogan Store.

9 McLaren Street once known as the Woolshed Gully.

10 House on the right built by Thomas for brother William. Then named "**Bleak House**" after Charles Dickens story, now generally known as **Randell House**.

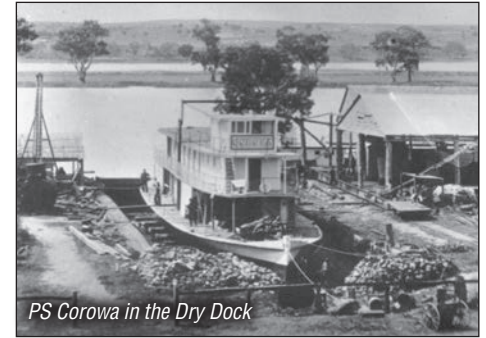
11 House on left also built by Thomas for brother, Francis Henry. Shop on other side of McLaren Street **first store in Mannum**, owned by Thomas Randell and run by his second wife Bella and son Frederick.

12 Woolshed was the original woolshed after which the street was first named.

13 Mannum Dry Dock, once the only Dry Dock in Australia. Bought by William Randell and towed by him to Goolwa to Mannum. Later sold to Captain Arnold.

14 P.S. Marion, built in Milang in 1897. Served as cargo and passenger boat until 1950s. In 1963 brought back to Mannum and entered dry dock. Now restored for a new life on the river.

Walk ends...we hope you enjoyed it!



PS Corowa in the Dry Dock

Scan the QR code for the walk
Supported by:

Discover Murray
MurrayRiver.com.au



William Richard Randell

(Known as the Father of Mannum 1824-1911)

The man who launched a steamer on the board breast of the Murray River was William R Randell and there was no prouder, more honourable name in this State. He was an old pioneer in the double sense, since in his early life he helped to develop the land, and later took a premier part in developing Australia's great Murray River system, with which his name would be forever indelibly associated.

In 1852 William Randell determined probably after long thought to build a steamer and navigate the Snowy River diggings - a gold idea. The timber for the boat was cut at Gumeracha and carted to Mannum. Randell had little or no experience in boat building or machinery, but such details did not daunt, much less deter older settlers.

On March 25, 1853 the first steam boat that ever floated on the Murray, "Mary Ann", with Captain WR Randell (the owner) and his brother Thomas as the crew, took her departure for the cruise up the Murray loaded with 20 tons of cargo. The water was low but she made her way as far as Penns Reach, 20-30 miles above the North-West Bend and there stuck.

Unable to proceed further, a return was made to Mannum. That was voyage No. 1, not a striking adventure, but the beginning of a great future, and therefore ever memorable.



William Randell by the 'Mary Ann' boiler

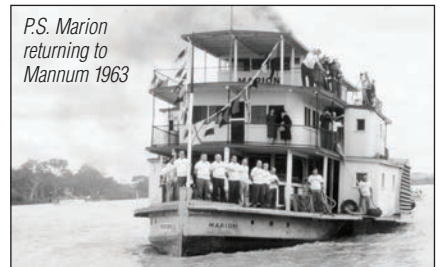
Paddle Steamer 'Marion'

The "P.S. Marion" was registered in 1900 and finished her passenger run in 1950.

The Paddle Steamer 'Marion' was built in 1897 by A.H. Landseer for Mr G.S. Fowler, an Adelaide Merchant, for use as a pleasure boat. Fowler died before she was completed and the vessel was sold to a Wentworth merchant, Mr William Bowring. He installed the engines and used it as a store steamer on the Darling River.

In 1908 Chaffey Brothers bought her. When they dismantled the P.S. Pearl some of this Steamer's superstructure was used to build up the "Marion" into her present carrying capacity. About this time she entered the passenger trade. Later the "Marion" passed to Gem Navigation Co., when that company bought out the old Gem Company. In 1919 she passed into the hands of Murray Shipping Limited. Later she was purchased by Murray Steamers Ltd. and in June 1963 by the National Trust of South Australia when she came to Mannum. Now owned by the Mid-Murray Council.

The "Marion" has been restored by a group of enthusiastic volunteers and put back in the river to take people on cruises. Visit www.psmarion.com



P.S. Marion returning to Mannum 1963

Easy walks without map Mannum Walk 3

A quiet walk along the Murray River, duration approx. 1 hour

From the Mannum Visitor Information Centre walk along **Randell Street** to **Wattle Street** (alongside the Bowling Club) then turn down to **Mary Ann Reserve** and continue to walk **South** into **River Lane**. Continue to **Baseby Reserve** on which several shacks have been built. Walk through and continue **South** through unspoilt river vegetation. Wet conditions may make this area impassable at times. Walk no further than approximately 100 metres then return along the same route.

Pumping Station No. 1. The start of the water supply for Adelaide and other areas of South Australia

Coffer Dam (opposite the pumping station in the river) Holds the pump which lifts water into the pumping station.

Alternatives:

A. From **Baseby Reserve** walk **Westward** and climb the steep hill to the Golf Course. Take foot tracks along the edge of fairway to **Brooks Street** then **East** to **Port Mannum Road** and down to **River Lane**.

B. Instead of descending Port Mannum Hill, walk **Northward** along the **Esplanade** and enjoy the **River** views before walking down **Johnston Hill** to **River Lane**.